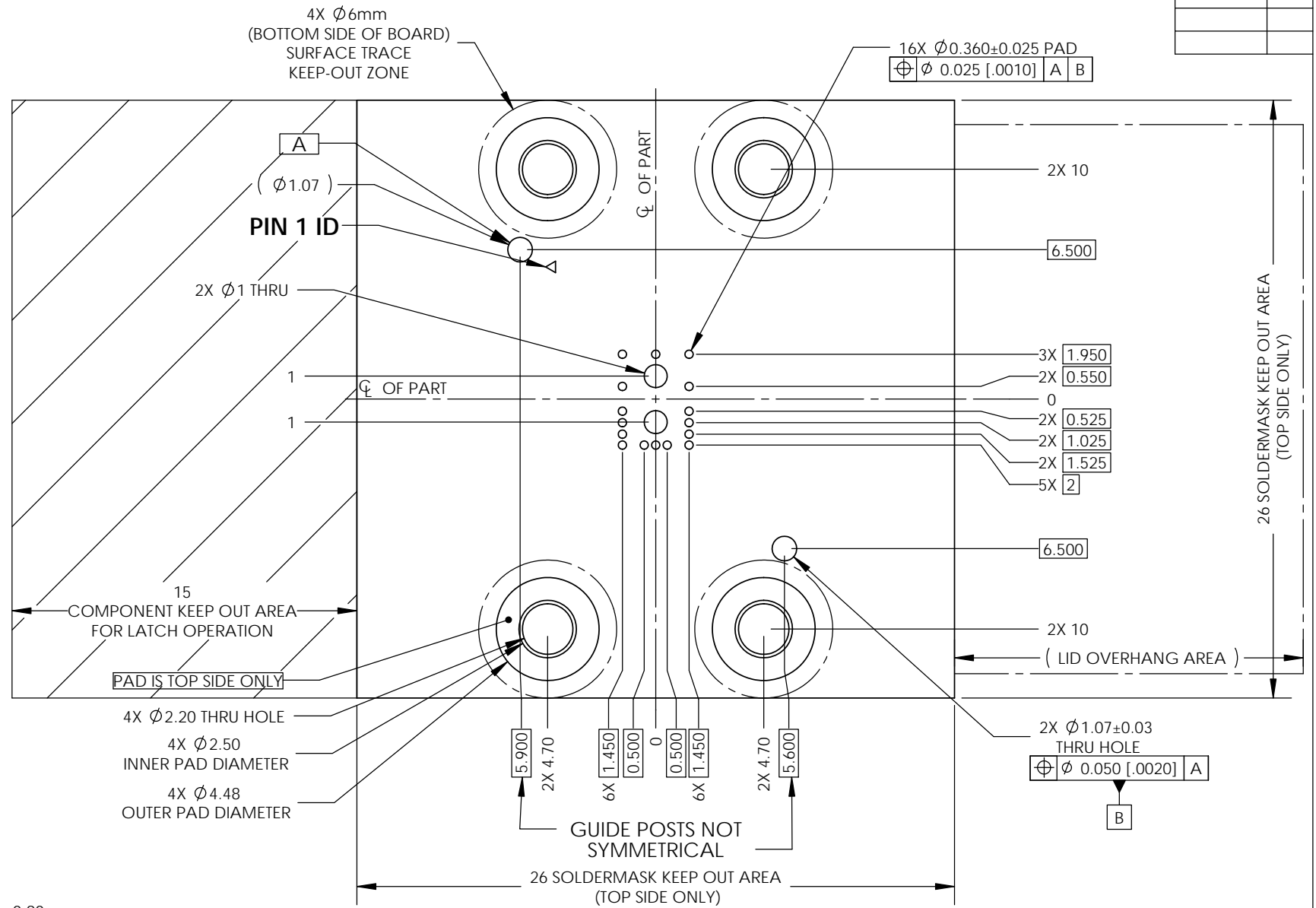
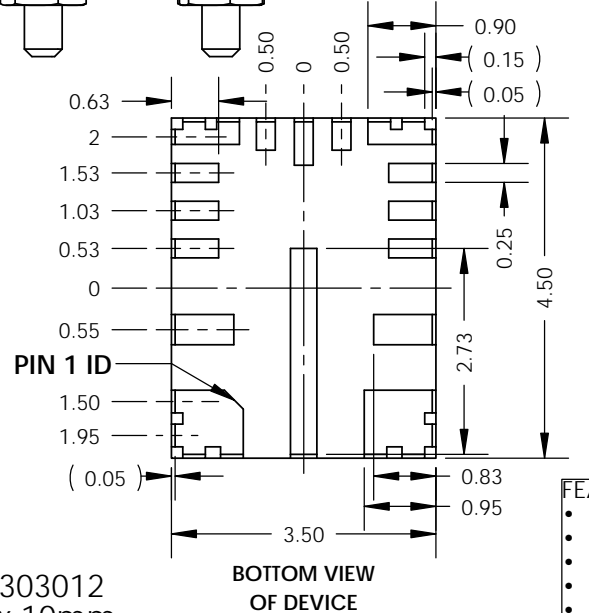
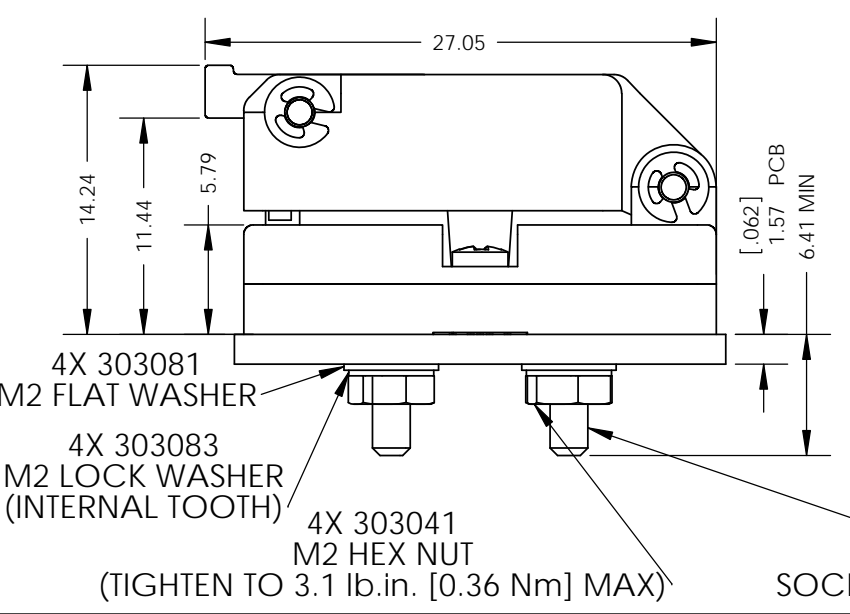
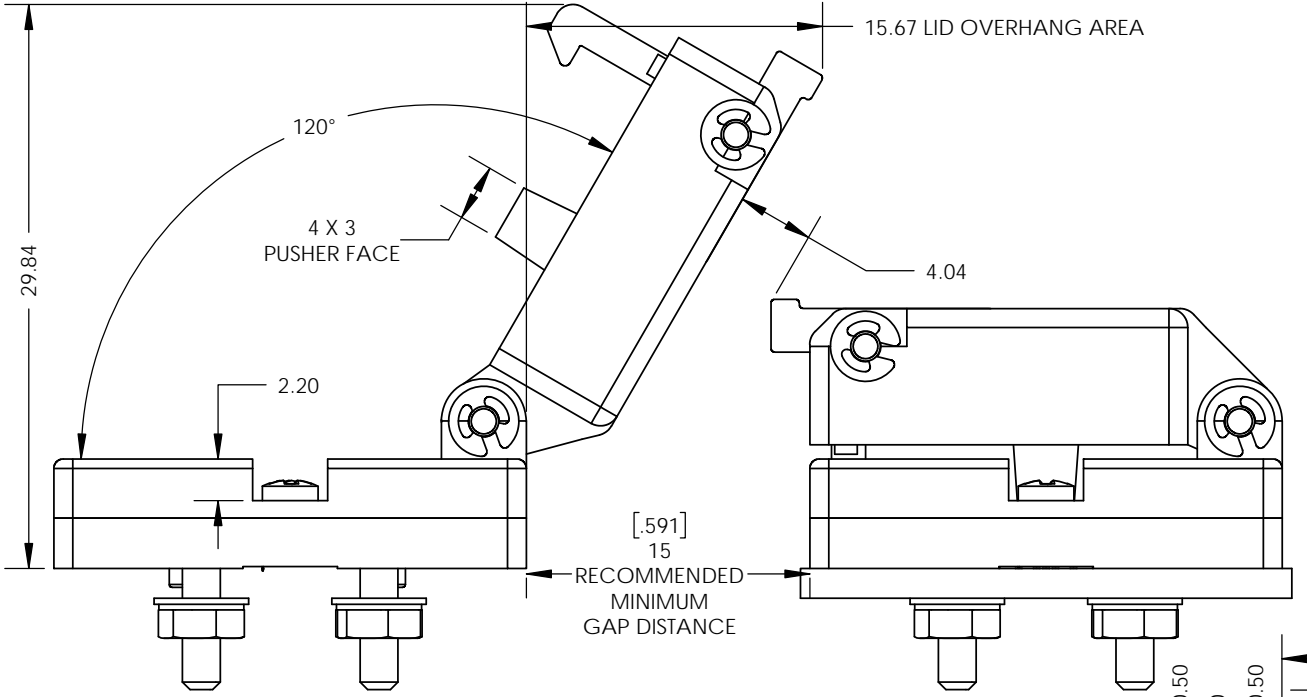
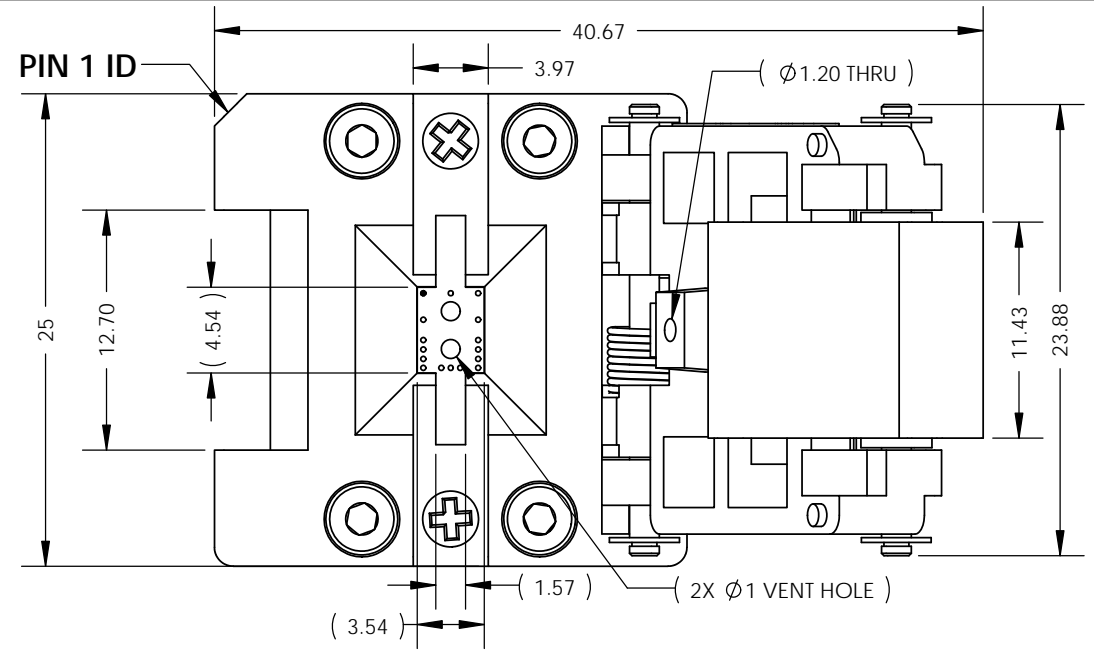


DATE	DRN
3/8/2019	HM



**TOP VIEW OF BOARD**

**NOTES:**

- TOOLS REQUIRED FOR ASSEMBLY: 1.5mm ALLEN TORQUE DRIVER, 4mm HEX SOCKET DRIVER
- PCB PAD PLATING: 30 µin. HARD Au OVER 300 µin. Ni OVER 1oz. MIN. Cu
- CONTACT PLATING: 30 µin. Au OVER 75 µin. Ni
- PLASTIC MATERIAL: ULTEM 2210EPR
- ALL Au PADS SHOULD BE SAME THICKNESS.
- BOARD LAYOUT TOLERANCE: ± 0.05mm UNLESS OTHERWISE SPECIFIED.
- FILLED VIAS ARE ACCEPTABLE PROVIDED FILLER MATERIAL CAN WITHSTAND CONTACT FORCE AT BURN-IN TEMPERATURE.
- SOCKET SHOULD FIT FREELY INTO PCB.

P/N: 16QHCY14535

PROPRIETARY

- FEATURES:**
- PIN = H038LL1A (OPERATING @ 29.8gf)
  - TWEEZER SLOTS
  - SOLID PLASTIC LID W/ THRU HOLE
  - WETTABLE STEP
  - 2X VENT HOLE THRU SOCKET & PCB
  - VENT SLOT IN NEST SUB-ASSEMBLY
  - REVERSE SEATING

THIS DRAWING IS SUBJECT TO CHANGE WITHOUT NOTICE. PLEASE REQUEST A CURRENT DRAWING WHEN LAYING OUT BOARDS.	SIZE: B	NAME	DATE	DWG NO.	SHEET 1 OF 1
	DRAWN	HM	3/8/2019	S16QHCY14535	
SCALE: VARIOUS	CHECKED	FG	3/8/2019	TITLE:	C SERIES H-PIN QFN, 4.5 x 3.5mm DEVICE, MIXED PITCH, 16x H-PINS
UNITS: mmgs	ENG APPR.				
SOLIDWORKS CREATED FILE	MFG APPR.				
				2601 Texas Drive Irving, TX 75062	