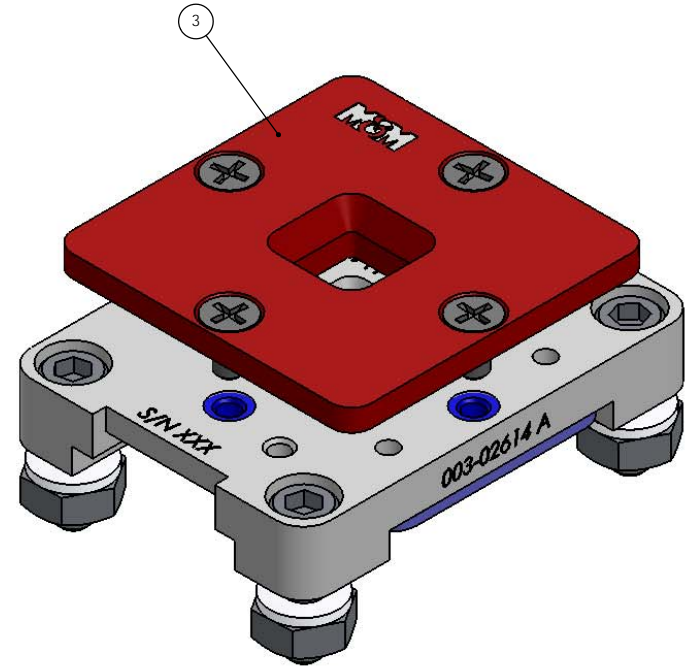
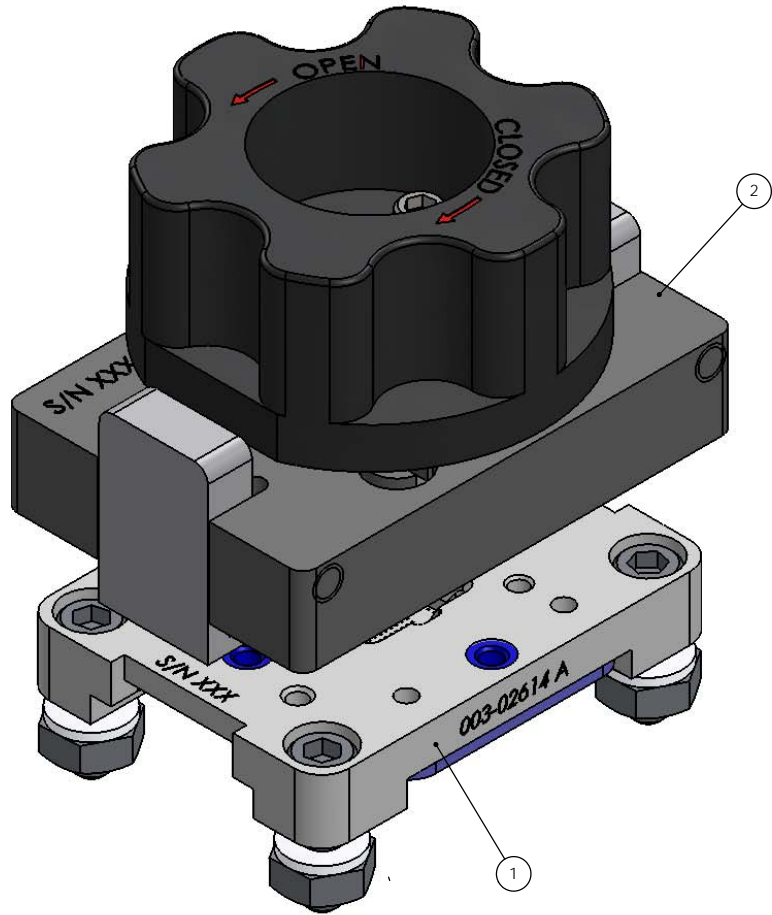


PROPRIETARY AND CONFIDENTIAL  
 THE INFORMATION CONTAINED IN THIS DRAWING IS THE SOLE PROPERTY OF M&M SPECIALTIES INC. ANY REPRODUCTION  
 IN PART OR AS A WHOLE WITHOUT THE WRITTEN PERMISSION OF M&M SPECIALTIES, INC. IS PROHIBITED.

REVISIONS				
ZONE	REV.	DESCRIPTION	DATE	APPROVED
	A	RELEASE TO PRODUCTION	1/16/19	S.G.



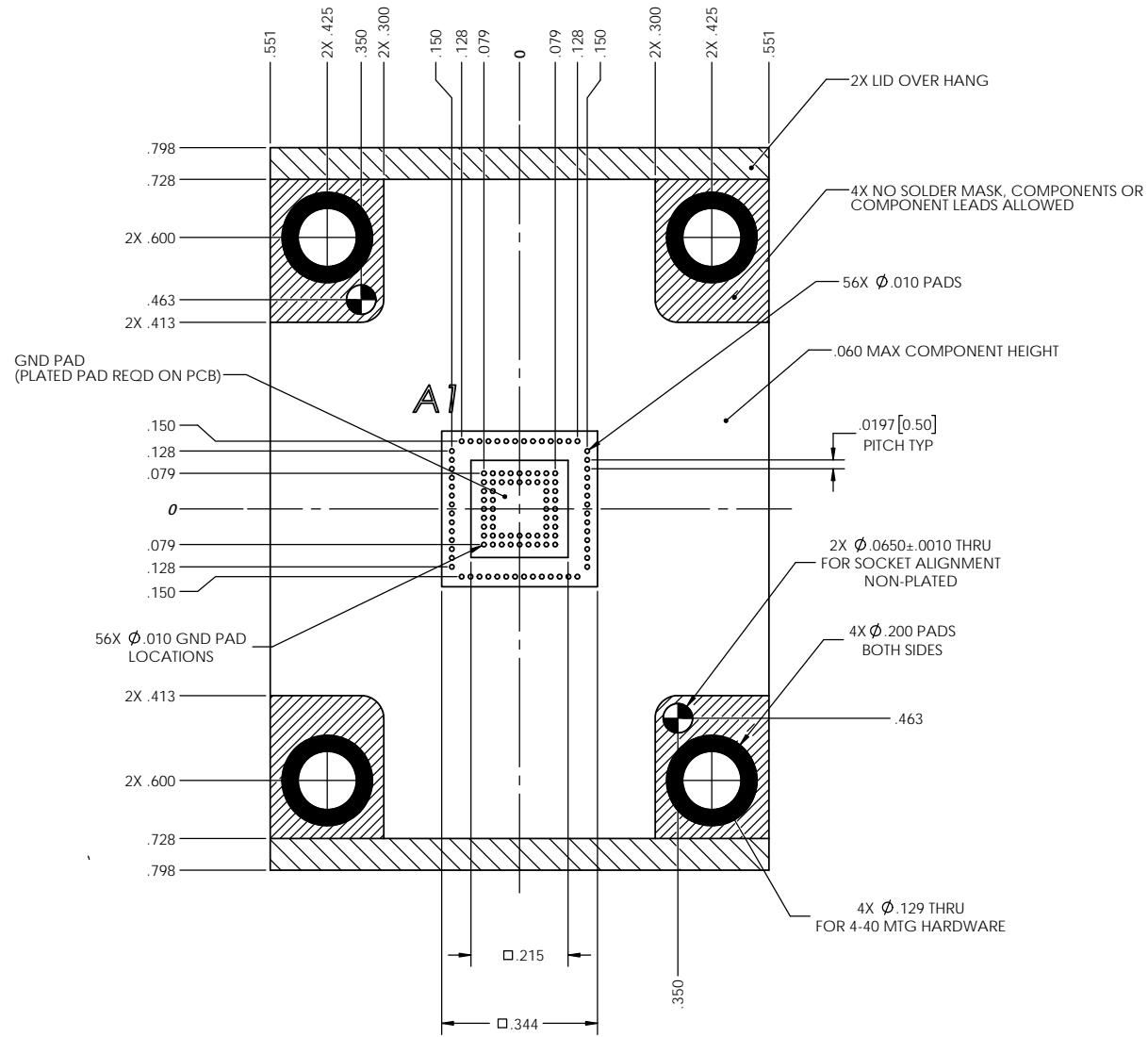
NOTES

- SPRING PROBE 30-006-00122 (126X) GENERATES THE FOLLOWING FORCES.  
 PRE-LOAD (.006)  
 FORCE @ PRE-LOAD (14.5 GRAMS)  
 TEST TRAVEL (.012)  
 FORCE @ TEST (29 GRAMS)  
 TOTAL FORCE @ PRE-LOAD (4 lb)  
 TOTAL FORCE @ TEST (8 lb)
- SOCKET DESIGNED TO PACKAGE P/N JCET 053718G QFN.
- REFER TO 50-001-02614 FOR SOCKET POPULATION CONFIGURATION.

ITEM NO.	PART NUMBER	DESCRIPTION	Default/D EFAULT DOUBLE CLAMP TWIST/Def ault/QTY.	FA DEFAULT/QTY.
1	50-001-02614	BASE ASSY	1	1
2	50-002-02614	LID ASSY	1	-
3	50-119-02614	LID ASSY	-	1

Material <not specified>		<b>SPECIALTIES LLC</b>		<b>M Specialties, LLC.</b> 1815 West 1st Suite 112 Mesa, Arizona 85202	
UNLESS OTHERWISE SPECIFIED: INTERPRET GEOMETRIC TOLERANCING PER ASME Y14.5M 1994 DIMENSIONS ARE IN INCHES TOLERANCES: DECIMAL .XX ± .01 XXX ± .003 XXXX ± .0010 ANGULAR X ± 2.0 DEG.					
ENGINEER	S.G.	DATE	TITLE: SOCKET ASSY, 56 QFN		
DRAWN	SG	1/16/19	SIZE	DWG. NO.	REV
ENG. APPR.	S.G.	1/16/19	C	50-000-02614	A
MFG APPR.			SCALE: 2:1	WEIGHT:	SHEET 1 OF 7
DO NOT SCALE DRAWING					

Phone (800) 892-8760  
 Fax (480) 858-1882  
 www.mmspec.com



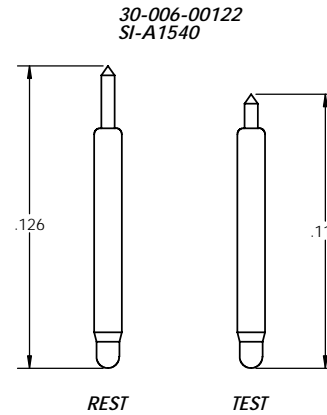
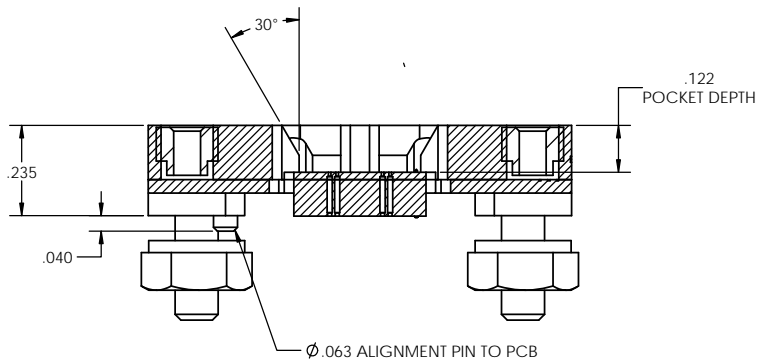
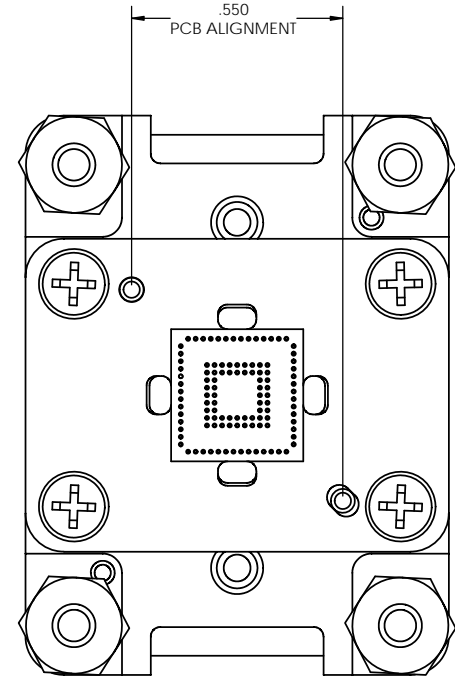
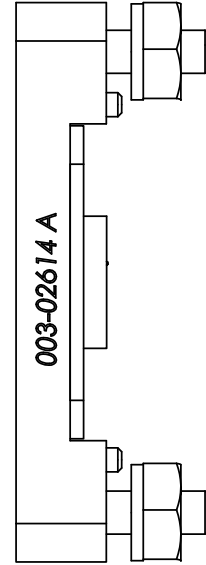
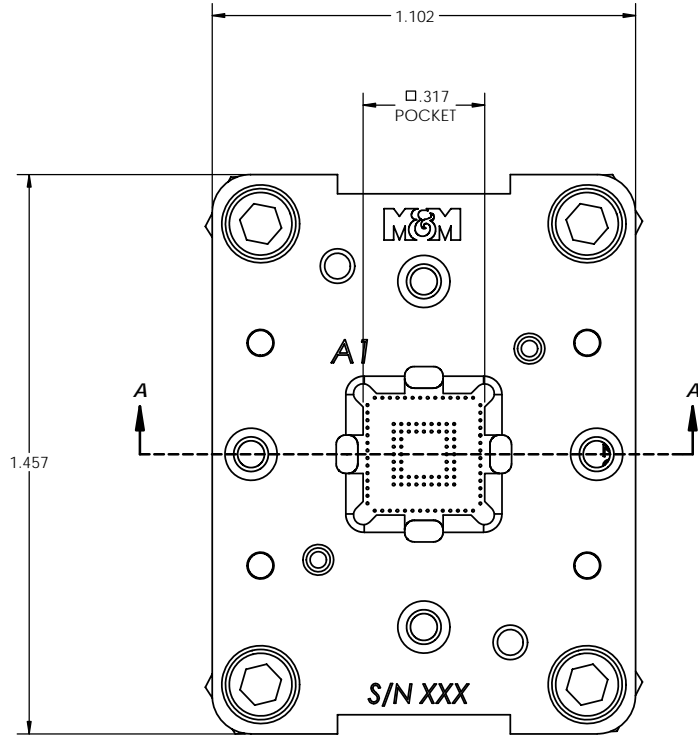
NOTES

1. VIEW IS LOOKING AT BOARD FROM SOCKET SIDE.
2. PAD TO PAD COPLANARITY TO BE +/- .025 MM INCLUDING THE PLATED AREA AROUND MOUNTING HOLES
3. RECOMMENDED PLATING FOR PLATED AREAS .005 MM (.000200") NICKEL UNDER .00125 MM (.000050") MIN GOLD HARDNESS TO BE 130-200 KNOOP.
4. SOLDER MASK, TRACES AND VIAS NOT TO EXCEED HEIGHT OF CONTACT PADS UNDERNEATH SOCKET.
5. FULL PAD AREA REQUIRED FOR CONTACT, NO VIAS ALLOWED IN PAD AREA.
6. VIA OFFSET AT BOARD DESIGNERS DISCRETION.
7. THE METAL PAD AREA IN THE CENTER OF THE SOCKET IS CONNECTED TO THE DEVICE GROUND (GND PIN). AVOID PLACEMENT OF VIAS AND TRACES UNDER THE PAD.



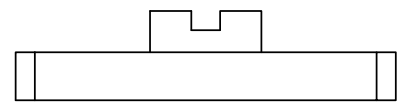
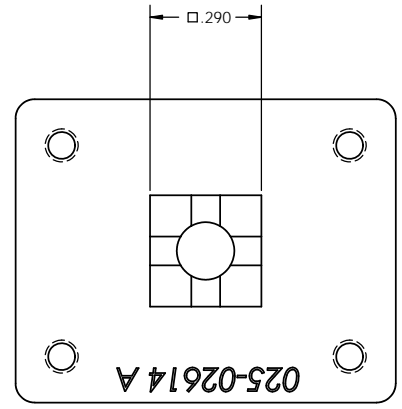
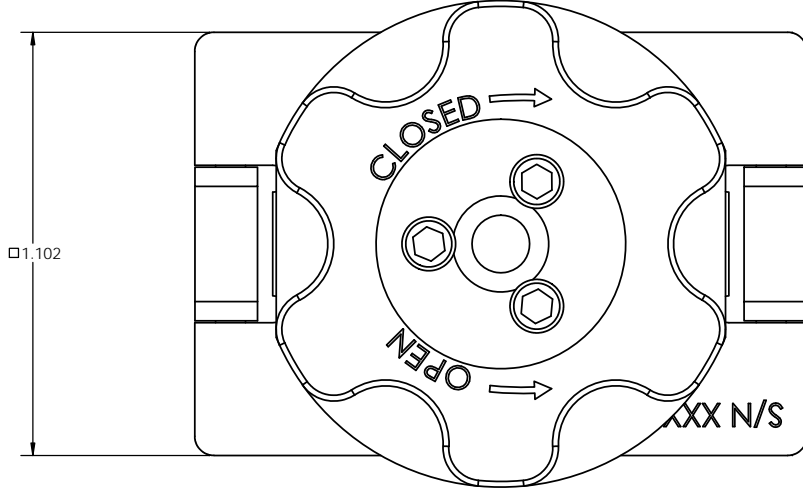
TITLE: FOOTPRINT 02614		
SIZE: C	DWG. NO: 50-000-02614	REV: A
SCALE: 1:2	WEIGHT:	SHEET 2 OF 7

PROPRIETARY AND CONFIDENTIAL  
 THE INFORMATION CONTAINED IN THIS DRAWING IS THE SOLE PROPERTY OF M&M SPECIALTIES INC. ANY REPRODUCTION  
 IN PART OR AS A WHOLE WITHOUT THE WRITTEN PERMISSION OF M&M SPECIALTIES, INC. IS PROHIBITED.

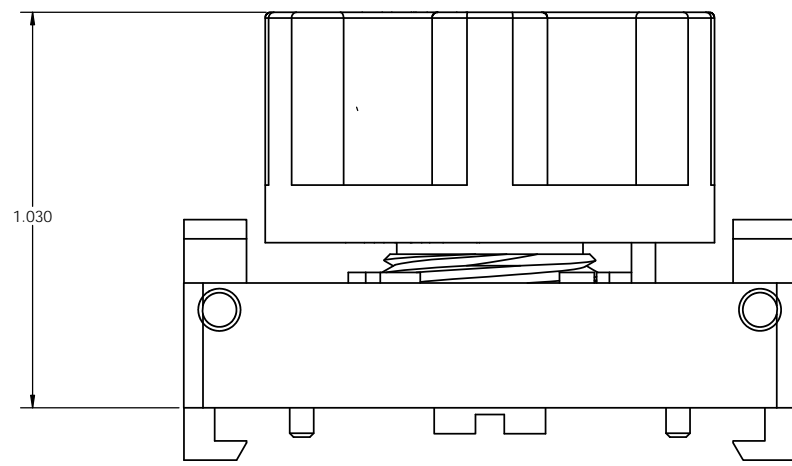


TITLE: BASE ASSY		
SIZE: C	DWG. NO: 50-000-02614	REV: A
SCALE: 1:2	WEIGHT:	SHEET 3 OF 7

PROPRIETARY AND CONFIDENTIAL  
 THE INFORMATION CONTAINED IN THIS DRAWING IS THE SOLE PROPERTY OF M&M SPECIALTIES INC. ANY REPRODUCTION  
 IN PART OR AS A WHOLE WITHOUT THE WRITTEN PERMISSION OF M&M SPECIALTIES, INC. IS PROHIBITED.



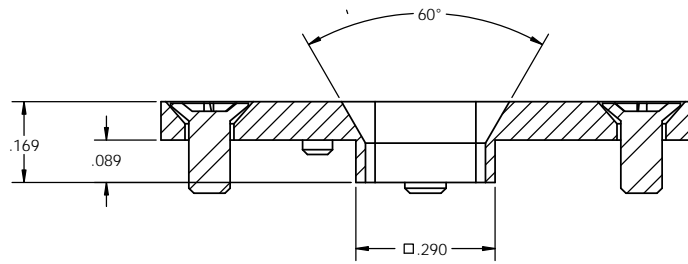
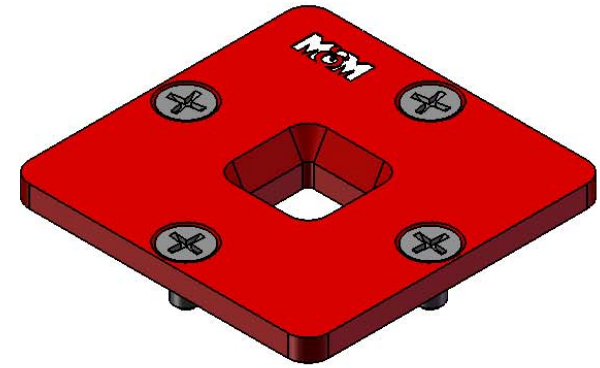
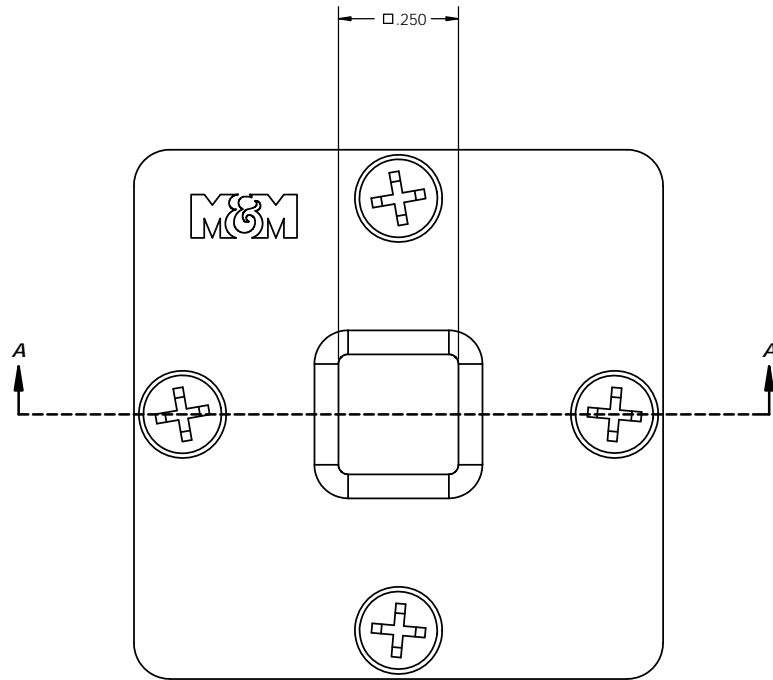
PRESSURE BLOCK  
 50-025-02614



TITLE:			LID ASSY
SIZE	DWG. NO.	REV	
C	50-000-02614	A	
SCALE: 1:2	WEIGHT:	SHEET 4 OF 7	

8 7 6 5 4 3 2 1  
F  
E  
D  
C  
B  
A

PROPRIETARY AND CONFIDENTIAL  
THE INFORMATION CONTAINED IN THIS DRAWING IS THE SOLE PROPERTY OF M&M SPECIALTIES INC. ANY REPRODUCTION  
IN PART OR AS A WHOLE WITHOUT THE WRITTEN PERMISSION OF M&M SPECIALTIES, INC. IS PROHIBITED.

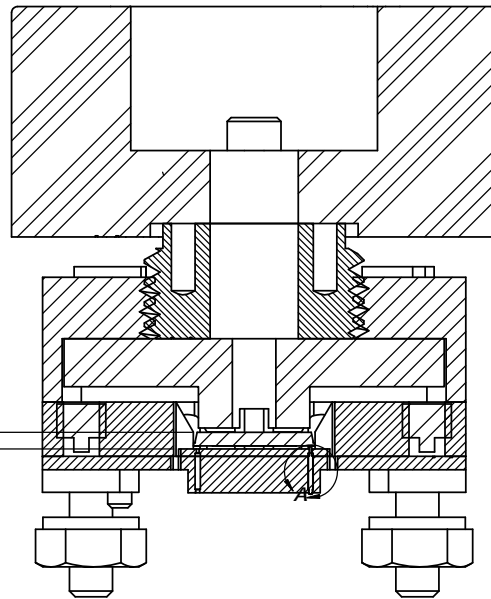
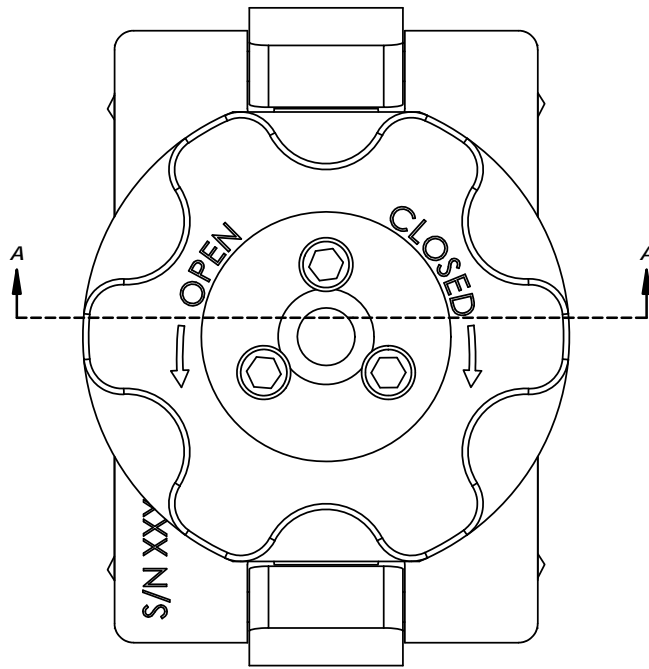


SECTION A-A  
SCALE 5 : 1



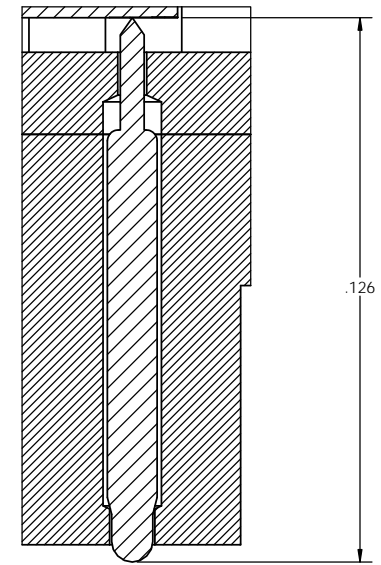
TITLE: FA LID		
SIZE C	DWG. NO. 50-000-02614	REV A
SCALE: 1:2	WEIGHT:	SHEET 5 OF 7

PROPRIETARY AND CONFIDENTIAL  
 THE INFORMATION CONTAINED IN THIS DRAWING IS THE SOLE PROPERTY OF M&M SPECIALTIES INC. ANY REPRODUCTION  
 IN PART OR AS A WHOLE WITHOUT THE WRITTEN PERMISSION OF M&M SPECIALTIES, INC. IS PROHIBITED.



.043 [1.10]  
 NOM PACKAGE THICKNESS

SECTION A-A  
 SCALE 4 : 1



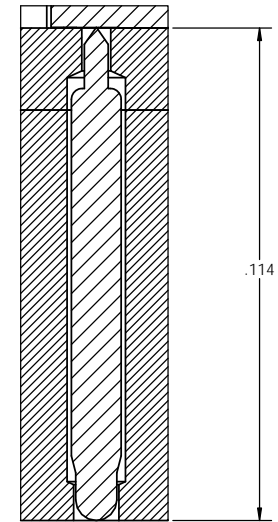
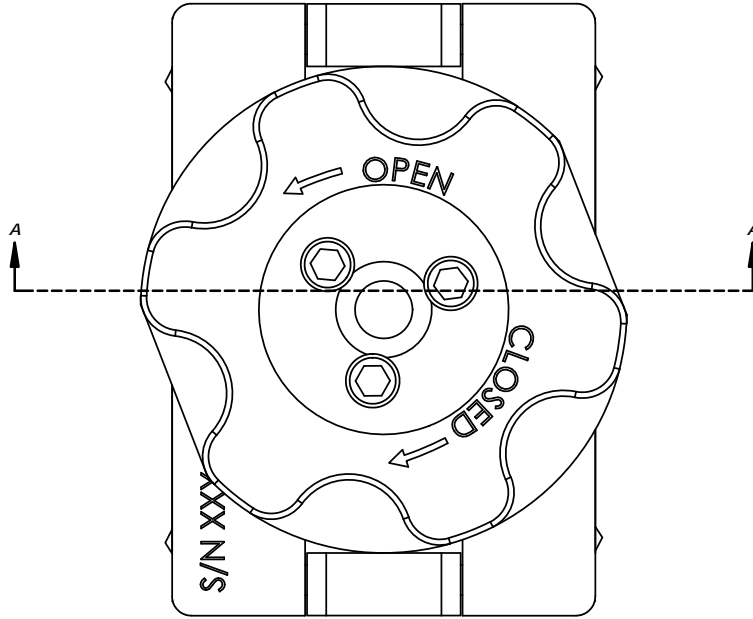
DETAIL A  
 SCALE 45 : 1



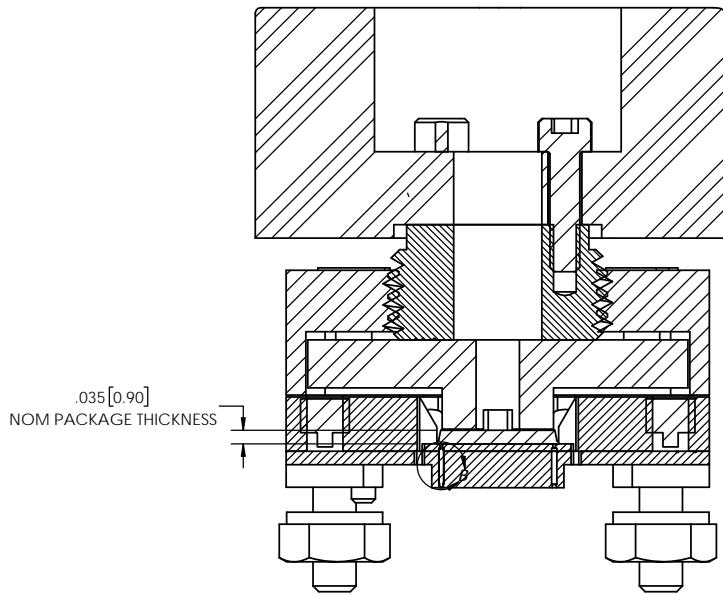
TITLE: SOCKET & LID ASSY REST		
SIZE <b>C</b>	DWG. NO. 50-000-02614	REV <b>A</b>
SCALE: 1:2	WEIGHT:	SHEET 6 OF 7

8 7 6 5 4 3 2 1  
F  
E  
D  
C  
B  
A

PROPRIETARY AND CONFIDENTIAL  
THE INFORMATION CONTAINED IN THIS DRAWING IS THE SOLE PROPERTY OF M&M SPECIALTIES INC. ANY REPRODUCTION  
IN PART OR AS A WHOLE WITHOUT THE WRITTEN PERMISSION OF M&M SPECIALTIES, INC. IS PROHIBITED.



DETAIL B  
SCALE 45 : 1



SECTION A-A  
SCALE 4 : 1



TITLE: SOCKET & LID ASSY TEST		
SIZE C	DWG. NO. 50-000-02614	REV A
SCALE: 1:2	WEIGHT:	SHEET 7 OF 7